

# STAR & Gateway Education to Employment with PORSE

Secondary School  
and Beyond in 2022

**STAR and Gateway  
Secondary School  
Early Childhood  
Education Programmes  
New Zealand  
Certificate in Early  
Childhood Education  
and Care (Level 4)**



[educationandtraining.co.nz](http://educationandtraining.co.nz)

# Who we are and what we offer to Schools and Learners

**PORSE Education & Training (NZ) Ltd is an accredited Private Training Establishment with a strong focus on early childhood education and care and nurturing respectful relationships between adults and children.**

PORSE has established training and education programmes based on NZQA unit standards. These programmes encourage students to become more knowledgeable, thoughtful and sensitively attuned to a child's emotional wellbeing and developing mind in the early years.

The focus of the programmes offered by PORSE Education & Training is to provide relevant and purposeful training that enables students to gain the skills and hands-on practical experience they require to transition from study to work.

PORSE Education & Training (NZ) Ltd is registered and accredited by the New Zealand Qualifications Authority (NZQA) to deliver the

New Zealand Certificate in Early Childhood Education & Care (Level 4) as well as a selection of Level 2 and Level 3 unit standards delivered in secondary schools as a part of the STAR and Gateway programmes.

The Unit Standards offered for Level 2 and Level 3 to STAR and Gateway learners, are selected from the following qualifications (details for each can be found on page 7).

- NZ Certificate in Early Childhood Learning and Care (Level 2)
- NZ Certificate in Early Childhood Education and Care (Level 3)

PORSE offers high quality educational outcomes and has continued to hold the highest category available by NZQA (Category 1) for educational performance and self-assessment, during our last External Evaluation Review in 2021.

## Vision

To unleash human potential through purposeful teaching and learning.

## Mission

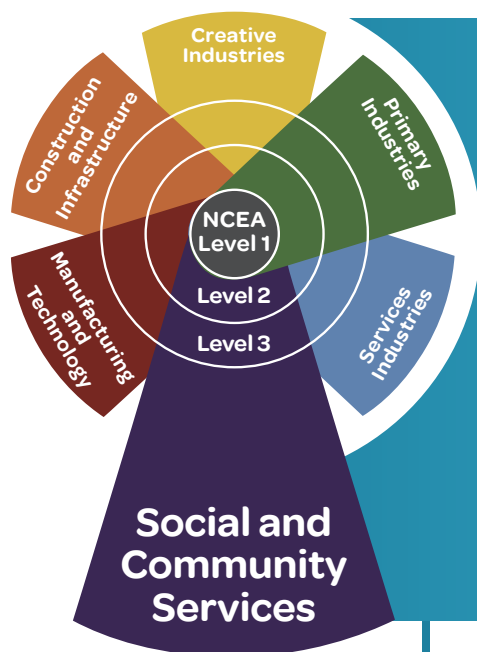
To have all people engaged in completing qualifications and gaining employment.



Download the PORSE External Evaluation Report to read more about the quality of our performance:  
[www.nzqa.govt.nz/providers/details.do?providerId=822442001](http://www.nzqa.govt.nz/providers/details.do?providerId=822442001)

# Education to Employment Pathways with PORSE

PORSE provides a career pathway, offering students the opportunity to begin working on unit standards at school before transitioning straight from the classroom to further training and/or work in the early childhood sector.



## STAR and Gateway ECE Programmes

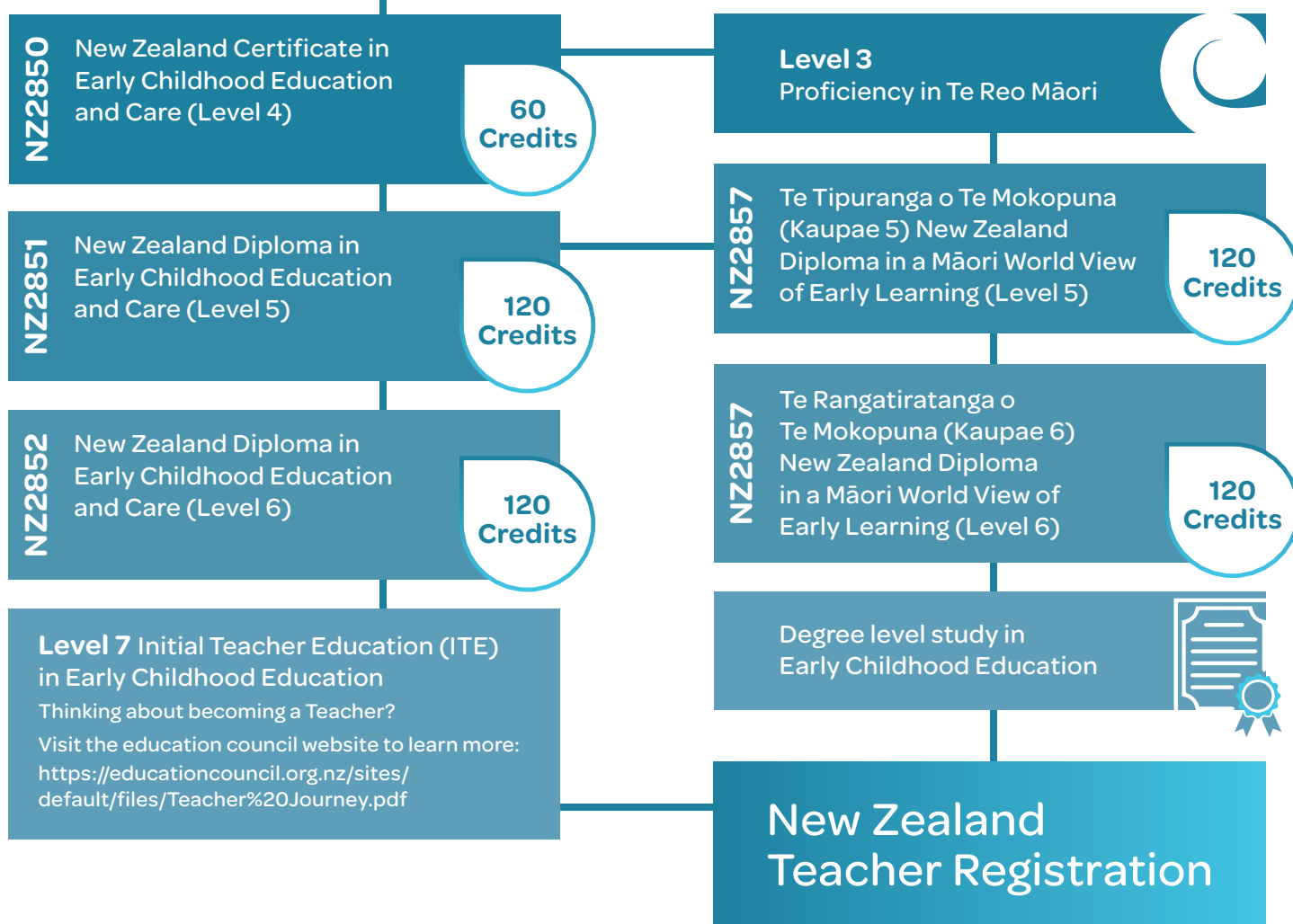
Selection of Level 2 & Level 3 Early Childhood Education unit standards

### PORSE Entry Requirements

- New Zealand Citizen or Permanent Resident.
- 16 years of age and above.
- Consent to a Police Vetting Check.
- STAR and Gateway - some unit standards will require a work placement.
- Level 4 Qualification - can work in a licensed ECE service (paid or unpaid) or caring for a child not yet attending school for a minimum of 12 hours per week and commit to 20 weeks of self-paced online learning.

### Vocational Pathways

Our unit standards are represented in the **Social & Community Services** Vocational Pathway.





# PORSE STAR and Gateway Programme

## What PORSE Can Offer Secondary Schools

- A series of early childhood unit standards selected from the following qualifications:
  - NZ Certificate in Early Childhood Learning and Care (Level 2)
  - NZ Certificate in Early Childhood Education and Care (Level 3)
- Programmes to suit individual schools and students.
- Moderation and assessment.
- Liaise with schools to document individual learning plans for each student.
- Flexible start dates and length of study throughout the year - yet sufficient in length to enable reallearning to take place.
- **Distance Learning, Tutor Support Visits** and new to the options available, **Online Learning**
- Access to tutors who can provide support and guidance via phone, email, or Zoom online conferencing.
- **Webinar Tutorials** for each unit standard that can be watched at the students' convenience.
- User-friendly unit standards based on sound early childhood theories.
- Frequent monitoring and assessment of learning progress with regular updates shared with the school.



## Delivery Models

A team of key staff are available at PORSE to support both students and co-ordinators, regardless of chosen delivery model, with any queries - be it a student requiring support with specific learning material or a co-ordinator unsure as to which unit standard/s to enrol their student/s in next.

**See page 8 for more information on pricing and what is covered under each delivery model.**

### Tutor Support Visit

Our Tutor Support Visit model is available to schools with four or more students in areas where a tutor is available.

### Distance Learning

Under this model, completed unit standards are sent by the school to PORSE National Support Office for assessment, feedback and moderation.

### Online Learning

We can now offer an online option for learners nationwide. Under this model, all Unit Standards are completed online and assessed online with feedback and moderation.

# The Programme

Schools can choose a programme that meets the specific needs of their students.

To help start students off with their ECE studies, PORSE can recommend an order of completion based on the level at which they are studying.

As students progress through their studies, we can make further recommendations as to which unit standard to move onto next.

Our experience indicates that when a group of students are studying together, it is most beneficial if they can complete the same units at the same time (or at least start together). Peer support enables stronger assessment submissions and ensures specific timeframes for completion are met.

We offer seven units each for both Level Two and Level Three from the New Zealand Certificate in Early Childhood Learning and Care (Level 2) and the New Zealand Certificate in Early Childhood Education and Care (Level 3). Our recommendation is that students enrol with 1-3 per term leaving them Term Four for resubmissions or study leave for other subjects and exams.

Students wishing to complete either of these qualifications may consider enrolling with a tertiary provider once they leave school.

PORSE do offer the **New Zealand Certificate in Early Childhood Education & Care (Level 4)**. This is a full time Distance Learning Course. For students leaving school this could be something for them to consider as a continuation of their study.

Please ask students who are interested in continuing their study to contact the PORSE Education and Training team directly via the PORSE website:

[www.educationandtraining.co.nz/level-4](http://www.educationandtraining.co.nz/level-4)

**FeesFree**  
GOVT NZ

## Fees Free for Level 4

Students leaving school and enrolling in the New Zealand Certificate in Early Childhood Education & Care (Level 4) will most likely be eligible for Fees Free.

[www.feesfree.govt.nz](http://www.feesfree.govt.nz)



# Workplace Component

**A workplace component is incorporated into each student's overall study and assessment programme.**

A number of unit standards have a mandatory work placement requirement (please see the next page for details).

To fulfil this workplace component of study, students must be working with a child (or children) aged from birth to school entry, and it must take place in a licensed early childhood setting or service.

This includes home-based services (including a child's family environment), centre-based services such as a childcare centre, kindergarten, play centre, Kohanga Reo or playgroup, and hospital-based services (paediatric playrooms). Work placements cannot be completed in a Primary School service.

Further clarification is provided with each Unit Standard that requires a work placement, paying attention to the NZQA Requirements for Outcomes and Assessment Criteria.

Those unit standards that do not require a work placement require the student to have a knowledge of pre-school children and their development.

The school is responsible for the arrangement of suitable work placements, however, PORSE may be able to provide some guidance as to how this can be approached.



“Research suggests that graduates with real-world experience are more desirable to employers than those without. Work experience at secondary school level is also considered important for positive longterm employment outcomes. Work experience allows students to apply what they have learned in their studies to real work environments.”

CAREERS NZ, 2018



# Unit Standards Available 2022

Below are the units available in 2022 (listed in recommended order of completion). We recommend aiming to complete two units per term, leaving Term Four for re-submissions and study leave.

Some unit standards will require the use of textbook/s, which can also be purchased through PORSE. Each unit standard contains required study information and assessment activities.

Level 2				Level 3			
Unit Standard		V	CR	Unit Standard		V	CR
<div>X</div> <div>TW</div>	<b>29852</b> Demonstrate knowledge of the basic needs and nutrition that support young children's holistic wellbeing and development.	1	4	<div>X</div> <div>TAL</div>	<b>10026</b> Demonstrate knowledge of children's development and learning and their relevance to an ECE service.	6	5
	<b>29855</b> Describe attachment relationships and strategies used to support transitions for young children.	1	3		<b>26707</b> Describe the value of play and create resources for children's development and learning in an ECE service.	4	4
	<b>29854</b> Describe personal and environmental hygiene and safety practices for the care of young children.	1	2		<b>10019</b> Describe and contribute to safe practices and a safe environment for children in an ECE service.	6	3
	<b>29857</b> Describe patterns of development and learning for young children.	1	5		<b>29867</b> Demonstrate knowledge of diverse whānau/families and use a range of effective communication strategies in an ECE service.	1	5
	<b>29858</b> Provide and reflect on the value of play experiences for a child's development and learning.	1	5		<b>26708</b> Develop respectful, reciprocal and responsive relationships with children in an ECE service.	4	4
	<b>29853</b> Demonstrate knowledge of health issues and services available to protect and enhance the wellbeing of young children.	1	3		<b>29865</b> Describe and reflect on practices to protect and promote the health and holistic wellbeing of children in an ECE service.	1	4
	<b>29859</b> Describe values and beliefs that form own personal approach to the learning and care of young children.	1	4		<b>10013</b> Explain the relevance of the New Zealand Early Childhood Curriculum Te Whāriki as a framework for programme development.	6	2
Total Credits @ Level 2 26				Total Credits @ Level 3 27			

X

 These unit standards **DO NOT** require a work placement, however they do require the student to have knowledge of children under the age of five and their development in an ECE setting (this includes a home environment).

Textbooks (prices exclusive of GST)		
TAL	Take Another Look	\$ 27.82
TU5	Thriving Under 5	\$ 20.00
TW	Te Whāriki (printed)	\$ 10.00

Schools may access Te Whāriki (electronic copy) free of charge here:  
<https://www.education.govt.nz/assets/Documents/Early-Childhood/Te-Whariki-Early-Childhood-Curriculum-ENG-Web.pdf>



# PORSE Programme Tutors

All PORSE Programme Tutors are fully qualified early childhood teachers with experience in teaching adults.

## Choose our Tutor Support Visit Model

PORSE engages in a relationship-based model of learning, with the relationship and connection between student and teacher being an important component of how well a student will learn and how much they will enjoy learning.

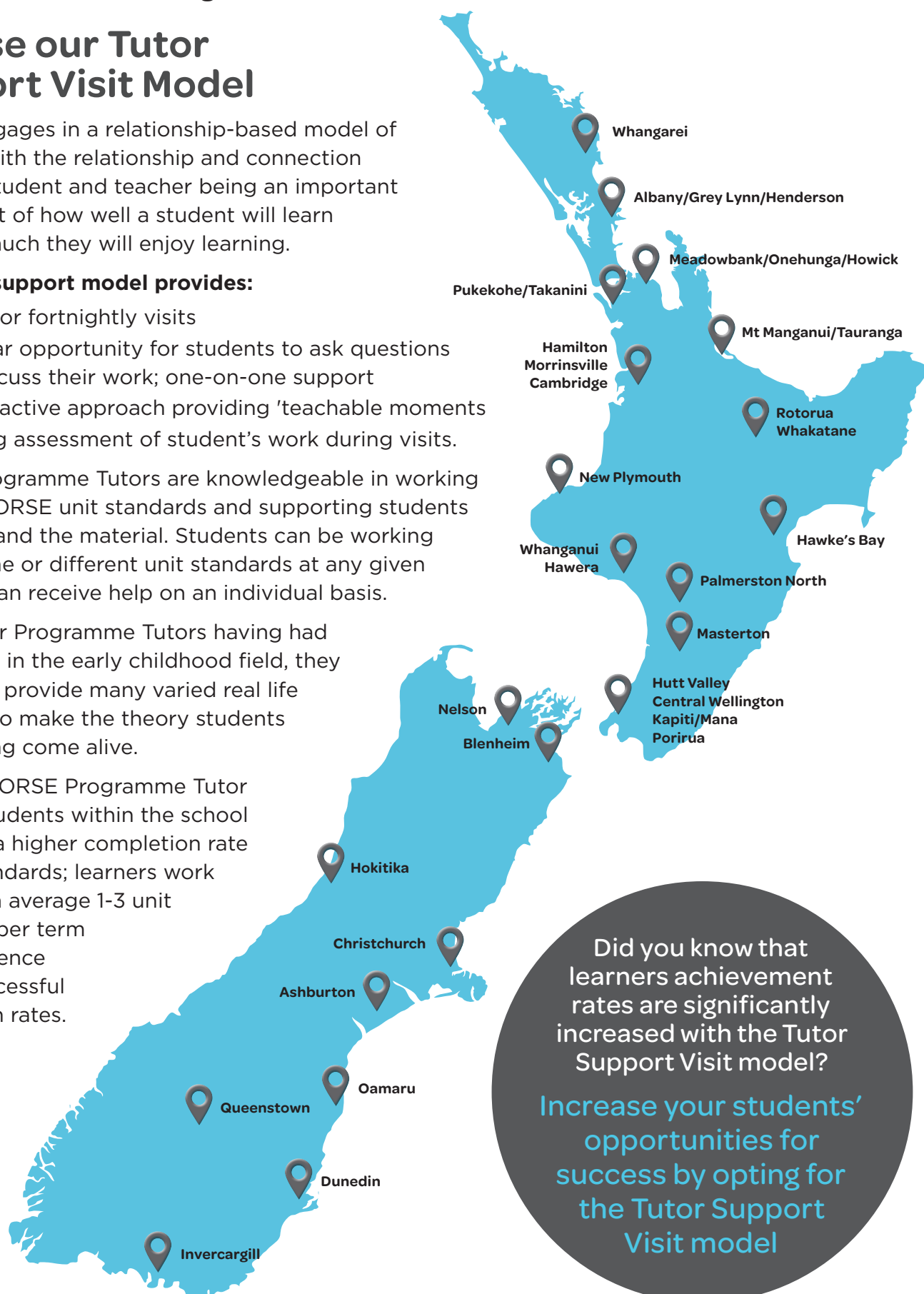
### The tutor support model provides:

- weekly or fortnightly visits
- a regular opportunity for students to ask questions and discuss their work; one-on-one support
- an interactive approach providing 'teachable moments'
- ongoing assessment of student's work during visits.

PORSE Programme Tutors are knowledgeable in working with the PORSE unit standards and supporting students to understand the material. Students can be working on the same or different unit standards at any given time and can receive help on an individual basis.

With all our Programme Tutors having had experience in the early childhood field, they are able to provide many varied real life examples to make the theory students are studying come alive.

Having a PORSE Programme Tutor support students within the school promotes a higher completion rate of unit standards; learners work through on average 1-3 unit standards per term and experience higher successful completion rates.



Did you know that learners achievement rates are significantly increased with the Tutor Support Visit model?

**Increase your students' opportunities for success by opting for the Tutor Support Visit model**



# Pricing Structure<sup>1</sup>

There are three different delivery model options for you to choose from - Tutor Support Visit Model, Distance Learning Model or the Online Learning Model.

## Tutor Support Visit

Our Tutor Support Visit Model is available to schools with four students or more in areas where a tutor is available<sup>2</sup>:

- **Student numbers between four and fourteen**  
1 x one-hour visit per fortnight
- **When student numbers exceed fourteen**  
1 x two-hour visit per fortnight or  
1 x one-hour visit per week

Under this support model students complete the learning and assessment activities in their unit standards between tutor visits. During their visits, the PORSE Programme Tutor will support your students by answering any questions, providing clarification on content and meaning, while providing face-to-face feedback whilst marking their work.

Your PORSE Programme Tutor is the best person to recommend which unit standards students should complete and in which order. They will provide you with regular visit notes advising when a student has completed a unit standard and provide a suggestion as to what to order next for individual students.

## Distance Learning

Under this model, completed unit standards are submitted to PORSE National Support Office for assessment, feedback and moderation.

## Online Learning

Under this model, all work is completed and submitted online for assessment, feedback and moderation.

[www.online.educationandtraining.co.nz](http://www.online.educationandtraining.co.nz)

Cost  
**\$32.50**  
per credit

Cost  
**\$30.00**  
per credit

Cost  
**\$22.50**  
per credit

Cost  
**\$22.50**  
per credit

## Costs for all Delivery Models Include:

- Unit standard workbooks for each student, except the Online Model which is accessed electronically
- All assessment and moderation.
- Regular notification of student results.
- Newly designed Webinars for each unit standard.
- Tutor support via email and/or phone.

## Additional or One-Off Tutor Support Visits

Schools based in an area where tutors are available can request additional or one-off tutor support visits (in either delivery model) at a cost of \$50.00 per hour (excl GST).

## Administration and Postage

Orders of one or two unit standards and/or textbook-only orders will incur a \$8.50 +GST courier and handling fee.

## Schools Provide

- Organisation of a suitable work placement.
- Safety checks and risk assessment of students carried out (in accordance with the Vulnerable Children Act prior to commencing work placements).
- Transport arrangements to and from work placements.
- NZQA costs, including registration of unit standards.
- Postage cost when submitting unit standards to PORSE for assessment.



Send by courier to -  
**PORSE STAR Gateway**  
903 Florence Street  
Raureka, Hastings 4120

Or by post to - **PORSE STAR-Gateway**  
PO Box 200, Hastings 4156

<sup>1</sup> All prices quoted are exclusive of GST

<sup>2</sup> The TSV cost per credit rate includes travel (mileage and time) of the tutor.

# Enrolments and Orders

## Enrolling Students and Ordering Unit Standards

When enrolling a student for the first time in the current year, schools must provide:

- The student's full legal name (as it is recorded in the National Student Index)
- Date of birth
- Students Residential Status and Citizenship must be verified on the National Student Index website
- NSI number
- Email address for all Online Learning enrolments

All orders must be placed using the PORSE STAR/Gateway Enrolment and Learning Material Order Form.

## Unused Unit Standards

Unit standards may be returned to PORSE **within 60 days** of being ordered but **must** be in as new condition to be refunded. All returns must be accompanied by a PORSE STAR-Gateway Learning Materials Returns form.

Unit standards **must be completed within the same year** of the contract period and **cannot** be carried over into the following year.

## Invoicing

Schools will be invoiced on a monthly basis.

## What's next for your Learners?

2018 saw us introduce the **New Zealand Certificate in Early Childhood Education and Care (Level 4)** to our tertiary learners.

This will provide a stronger pathway from secondary to tertiary education for those students wishing to pursue a career in early childhood education. It will mean that your students wishing to pathway into further learning can benefit from completing some of the level 2 and level 3 unit standards at school prior to transitioning into a Level 4 qualification with PORSE on leaving school. This provides a stronger pathway with a great stepping stone and taster of what is to come if they choose to continue their learning with PORSE.

**For all the course information, application criteria, and online application form, go to: [www.educationandtraining.co.nz/level-4](http://www.educationandtraining.co.nz/level-4)**

**Enrol Now!**

The form is titled 'Enrolment Application 2022' and is for the 'New Zealand Certificate in Early Childhood Education and Care (Level 4)'. It includes sections for 'Personal Details', 'Enrolment Period', 'Introduction', 'Instructions', 'Contact Details', and 'National Student Index Number'. The form is designed to be filled out by a student or parent/guardian.

**PORSE offers two intakes per year**

### Intake One

Start Date	21 February 2022
Finish Date	8 July 2022
Applications Close	4 February 2022

### Intake Two

Start Date	25 July 2022
Finish Date	9 December 2022
Applications Close	8 July 2022



# NZ2850 New Zealand Certificate in Early Childhood Education & Care (Level 4)

For an application form to enrol in the New Zealand Certificate in Early Childhood Education and Care (Level 4) go to [www.educationandtraining.co.nz/level-4](http://www.educationandtraining.co.nz/level-4)

 **0800 626 643**

For programme content and delivery enquiries please ask to speak with a Training Tutor at National Support Office.

For administration enquiries (Studylink, fees, cross-crediting, etc), please ask to speak with the Administration and Quality Assurance Coordinator.

## *A professional pathway in ECE*

PORSE Education & Training is a Category One accredited, private training establishment with a strong focus on Early Childhood Education (ECE) and Care.

**ENROL  
NOW**

**For our February  
2022 Intake!**

Enrolment cut-off date  
**4 February  
2022**





